



PROJECT CENTER

<http://www.cricut.com>



DINOSAUR WALL DÉCOR



Design by: CricutDesignTeam (972 Projects)

About me: The Cricut Design Team is a collection of Cricut projects brought to you by Provo Craft's talented designers! We hope you find these projects to be an inspiration for all of your crafting needs!

Project skill level: advanced

Project time: less than 30 minutes

Project tags: Wall Décor/Wreaths/Banners

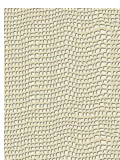
Boy Kids Playful

Using the Dino Play Cartridge, you can create this adorable dinosaur wall décor full of detail and texture!

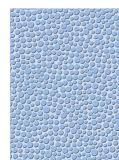
CRICUT®: WHAT WAS USED



Cricut Expression®
Machine with Plantin
SchoolBook and Accent
Essentials®



Outtlebug® A2 Mesh
Texture Emboss Folder



Outtlebug® A2 Tiny
Bubble Emboss Folder

OTHER MATERIALS NEEDED

- | | |
|----------------------------|---------------------------|
| Twine | Light blue cardstock (1) |
| 6" x 16" wooden frame | Blue cardstock (1) |
| Paint | Orange cardstock (1) |
| Sandpaper | Gray cardstock (1) |
| Ink | Dark orange cardstock (1) |
| Foam squares | Green cardstock (1) |
| Hot glue gun | Olive green cardstock (1) |
| Adhesive | Yellow cardstock (1) |
| Brown corrugated paper (1) | Purple cardstock (1) |

PROJECT CUT FILES

201200457_B Dinosaur Wall Décor.ccr

STEP 1

- Cricut® Cuts:
Dino Play Cartridge
- Dinosaur 1
 - Blue dinosaur (3 1/2" <Zoey>)
 - Light blue body (3 1/2" Shift + <Zoey-s>)
 - Gray horns (3 1/2" Layer + <Zoey>)
 - Orange toes/eyes/mouth (3 1/2" Layer + Shift + <Zoey-s>)
 - Dinosaur 2
 - Purple base (3 1/2" <Simon>)
 - Gray egg shell (3 1/2" Shift + <Simon-s>)
 - Dark orange dinosaur (3 1/2" Layer + <Simon>)

d. Orange body (3 1/2" Layer + Shift + <Simon-s>)

3. Dinosaur 3

a. Olive green dinosaur (3 1/2" <Kenzie>)

b. Blue layer (3 1/2" Shift + <Kenzie-s>)

c. Green body (3 1/2" Layer + <Kenzie>)

d. Yellow belly (3 1/2" Layer + Shift + <Kenzie-s>)

STEP 2

Paint wooden frame. Distress with sandpaper as desired.

STEP 3

Use hot glue gun to adhere brown corrugated paper into frame to create base. Paint as desired.

STEP 4

Create dinosaur 1 from cuts 1a-1d. Use Cuddlebug® Tiny Bubbles Folder on cut 1b. Ink edges on cut 1c. Use foam squares to layer together. Use foam squares to adhere to base.

STEP 5

Create dinosaur 2 from cuts 2a-2d. Use Cuddlebug® Mesh Folder on cut 2d. Ink edges on cut 2b. Use foam squares to layer together. Use foam squares to adhere to base.

STEP 6

Create dinosaur 3 from cuts 3a-3d. Use Cuddlebug® Tiny Bubbles Folder to emboss cut 3c. Use foam squares to layer together. Use foam squares to adhere to base.

STEP 7

Embellish as desired.

RELATED PROJECTS



Ride 'Em Cowgirl
Frame

[View details](#)



Monogram Rosette

[View details](#)



Word Collage
Boards

[View details](#)