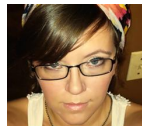




FALL WREATH: CREATE A CRITTER 2 CONTEST



Design by: [adavis81206](#) (4 Projects)

About me: I love all sorts of crafting: paper crafts, home decor, wearable, knitting, sewing, etc. I especially love being able to use my cricut for any of those projects! I also make a lot of classroom items

Project skill level: [moderate](#)

Project time: [1 hour to 2 hours](#)

Project tags: [Home Décor/Accents](#) [Wall Décor/Wreaths/Banners](#) [Thanksgiving](#) [Classic](#) [Holiday](#) [Holiday Décor](#) [Playful](#) [Naturalist](#) [Bohemian](#)

A quick and easy fall wreath. Accents can easily be changed out to fit any home decor.



CRICUT®: WHAT WAS USED



Cricut Imagine® Machine



Cricut Imagine® Art Cartridge, Imagine More Cards



Cricut Imagine® Colors & Patterns Cartridge, Snapshot: Nature

OTHER MATERIALS NEEDED

- cardstock
- 2 yds each color tulle
- hot glue/adhesive
- brown or black ink
- wreath form
- decorative ribbon and floral
- glitter glue

PROJECT CUT FILES

 [fall wreath CAC2.ccr](#)

STEP 1

Add bow to bottom and ribbon to hang.



Fall Wreath



Fall Wreath Detail

STEP 2

Cut tulle into strips and tie around wreath form. Add ribbon.

STEP 3

Decorate card stock pieces with glitter glue, distressing ink, etc. Piece layers of acorns, leaves, etc together and attach them to the floral bunches.

STEP 4

Decorate and piece sign together and attach with ribbon.

RELATED PROJECTS



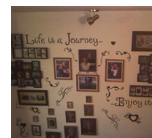
Princess Box

[View details](#)



Word Collage Boards

[View details](#)



Journey Wall

[View details](#)