

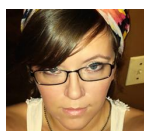


PROJECT CENTER

<http://www.cricut.com>



HALLOWEEN WREATH: CREATE A CRITTER 2 CONTEST



Design by: [adavis81206](#) (4 Projects)

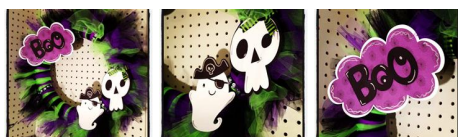
About me: I love all sorts of crafting: paper crafts, home decor, wearable, knitting, sewing, etc. I especially love being able to use my cricut for any of those projects! I also make a lot of classroom items

Project skill level: moderate

Project time: 1 hour to 2 hours

Project tags: School Family Home

[Décor/Accents](#) [Wall Décor/Wreaths/Banners](#) [Halloween](#) [Modern](#) [Trendy Kids](#) [Holiday Celebration](#) [Holiday Décor](#) [Playful](#) [Clean & Simple](#)



This is a great wreath to display at a Halloween party or for Trick-or-Treaters! The elements in this wreath even glow in the dark!

CRICUT®: WHAT WAS USED



Cricut Imagine®
Machine



Create a Critter 2
Cartridge

OTHER MATERIALS NEEDED

card stock (white and black)

adhesive

wreath form

coordinating ribbon

straight pins

glow in the dark paint

Pop-dots

2yds each color tulle

Halloween themed patterned paper

metallic markers

PROJECT CUT FILES

[Halloween Wreath CAC2.ccr](#)

STEP 1

Cut Tulle into strips and tie around wreath form.

STEP 2

Cut ghost, skull, and cloud from white card stock. Paint ghost and skull with glow in the dark paint.



halloween wreath detail 1

STEP 3

Cut other layers from black and patterned paper and piece layers together. Add accents with markers.



halloween wreath detail2

STEP 4

Attach elements to pins with glue or other adhesive and attach to the wreath. Attach ribbon to top for hanging.



Halloween Wreath

AWARDS



RELATED PROJECTS



Back to School Book Club

[View details](#)



Teacher's Pointer

[View details](#)



Gum Ball Jar

[View details](#)

<http://www.cricut.com>