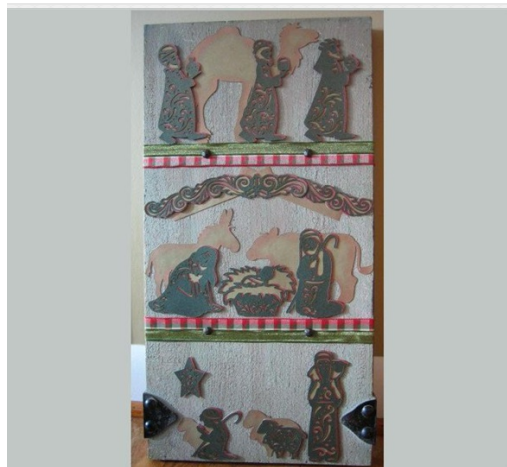


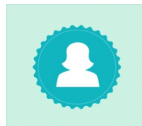


PROJECT CENTER

<http://www.cricut.com>



A QUILTED NATIVITY WALL MOUNT



Design by: [armstre](#) (2 Projects)

About me: Retired teacher with more time to craft...

Project skill level: moderate

Project time: 1 hour to 2 hours

Project tags: Christmas Vintage

Photos/Frames/Boards Wall

Décor/Wreaths/Banners Spiritual/Religious

A traditional nativity scene, including the manger, wisemen, and shepherds, mounted on a faux barn board panel.

CRICUT®: WHAT WAS USED



Cricut Mini®
Personal Electronic
Cutter



A Quilted Christmas
Cartridge



Folk Art Festival
Cartridge

OTHER MATERIALS NEEDED

Paper Studio Pearlized Cardstock

Barn board panel

Tacks

Recollections Precious Metals Cardstock

Plaid ribbon

PROJECT CUT FILES

[Quilted Nativity.ccr](#)

STEP 1

Figures are cut from dark green pearlized cardstock, backed with metallic gold cardstock. The camel, donkey, cow, and two sheep are basic gold shapes without the quilted layer. All figures, except the star, are cut from A Quilted Christmas. The star is cut from Folk Art Festival.

STEP 2

Figures are mounted on a faux barnboard panel (approximately 12" x 23") in three sections, separated by plaid ribbon strips.

AWARDS



RELATED PROJECTS



Christmas
Ornament Card

[View details](#)



Word Collage
Boards

[View details](#)



Reindeer Pillow

[View details](#)

<http://www.cricut.com>