

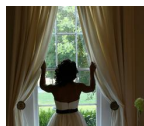


PROJECT CENTER

<http://www.cricut.com>



2013 DESK CALENDAR



Design by: [SophiaBates](#) (3 Projects)

About me: I enjoy scrapbooking, making cards, and designing themes for parties.

Project skill level: [easy](#)

Project time: 30 minutes to 1 hour

Project tags: [Home Décor/Accents](#) [Vintage](#)

[Organization](#) [Photos/Frames/Boards](#) [New](#)

[Year's](#) [Feminine](#) [Trendy](#) [Teacher Gifts/Cards](#)

[Hobbies](#) [Gifts](#)

A small desk calendar, I created with the Cricut Expression and the Elegant Edges cartridge.

CRICUT®: WHAT WAS USED



Cricut Expression®
Machine with Plantin
SchoolBook and Accent
Essentials®



Elegant Edges Cartridge

OTHER MATERIALS NEEDED

Flower Brads

Recollections - Graceful Paper Pack

Chipboard

Printed Calendar 2013

Brown & White Ribbon Bow

Quick-Dry Adhesive

Chocolate Chip Ink

STEP 1

Cricut Cartridge - Elegant Edges - Burst Frame (There are a lot of good frames that would work for a calendar!)

1. Cut Chipboard with deep cut blade set to 5 depth

2. Cut Size - 6H x6W (any size will work that you want to do for your work). Cut your

STEP 2

Using the same cut and normal blade cut your paper choice at 6H x6W with the Elegant Edges - Burst Frame.

STEP 3

Alphalicious Cartridge

1. Cut out 2013 and I welded them together. I cut this out at 2".

STEP 4

Apply the Elegant Edges Burst paper frame to the Elegant Edges burst chipboard frame. Ink the insides with ink color of your choice.

STEP 5

Punch the brads through the Elegant Edges front cover. Apply the printed 2013 Calendar Months to the brads. You will be able to pull the calendar months off from the brads.

STEP 6

Make a bow from your ribbon apply with adhesive and apply your 2013 year.

AWARDS



RELATED PROJECTS



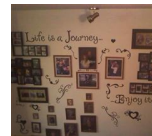
Princess Box

[View details](#)



Word Collage Boards

[View details](#)



Journey Wall

[View details](#)