

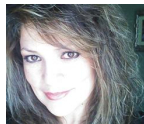


PROJECT CENTER

<http://www.cricut.com>



HUGS & KISSES



Design by: [Maria2193](#) (57 Projects)

About me: Please visit my blog: maria-linacreativedesigns.blogspot.com or find me on Pinterest at:

<http://www.pinterest.com/maria2193/>

Project skill level: [easy](#)

Project time: [30 minutes to 1 hour](#)

Project tags: [Sympathy Cards](#) [Trendy Kids Cards](#) [Clean & Simple](#)

One of the cards I made and sent to Newtown, CT

CRICUT®: WHAT WAS USED



Cricut Expression® Machine with Plantin SchoolBook and Accent Essentials®



Outtlebug® Machine



Create a Critter 2 Cartridge

OTHER MATERIALS NEEDED

ATG glue and pop dots

bright blue cardstock

Blue polka dot ribbon

Peachy Keen Stamps

embossing folder "damask"

purple cardstock

hot pink cardstock

white glitter paper

white cardstock

white pen

Stampin up "rose red" and "rich razzlebe

STEP 1

This card was made exceptionally bigger than usual, but you can adjust your cuts according to the card size you would typically use. Use the "Damask" embossing folder on white cardstock, ink edges with "rose red" ink and matte it to bright blue cardstock.



STEP 2

Wrap and glue blue ribbon on top left corner and on the bottom right corner. Matte it onto white cardstock and then matte everything onto the hot pink card base.

STEP 3

Cut HeartBee icon in white glitter paper and hot pink cardstock, approx 2-2.5 in. On the hot pink cut out, cut off the wings and halo and stamp the sad face on it and ink edges with "rose red". Cut icon shadow in purple and slightly ink edges with "rich razzleberry".

STEP 4

Cut out in purple cardstock the KoalaHrt phrase, appx 3-3 1/2 in. Faux stitch with white pen and cut off the arrow from the heart. Also cut out the phrase shift in hot pink cardstock and remove the arrow. Ink the edges, overlap the pink heart on top of the purple heart.

STEP 5

Pop dot the Heart with Halo and the heart in the center of hugs and kisses. Adhere tiny heart to top right side of card.

RELATED PROJECTS



Hope card

[View details](#)



Butterfly Kisses Card

[View details](#)



Flower Card

[View details](#)