

## LOTUS FLOWER POP UP CARD



**Design by:** [Beryl](#) (2 Projects)

**About me:** I went to Art School in my younger days. I am a 3D Google Earth Modeler ( the 3D buildings you see on Google Earth) I love paper sculpture, origami and using paper in new ways.

**Project skill level:** [moderate](#)

**Project time:** [30 minutes to 1 hour](#)

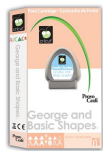
**Project tags:** [Birthday](#) [Get Well Cards](#)

[Mother's Day](#) [Spring](#) [Thank You Cards](#)

[Celebration Cards](#) [Love Notes/Cards](#) [Outdoors](#) [Outdoor/Animal Layouts](#) [Just Because Cards](#) [Friend Cards](#) [Naturalist](#) [Bohemian](#)

A Flower Pop Up Card with options for customizing. This project uses only the basic shapes that come with the cricut mini. One version is just the flower with embellishments, the other adds a 3D butterfly to the center. A pop up uses the power of the center fold to pull up and out and create a 3D surprise. I like to keep the outside of the card very plain, to increase the element of surprise when the card opens to reveal a 3D flower. Because the fold ( gully) has to open a 3D shape, its important to use card stock for the backing. My design uses two layers of for the backing. There are many possibilities by using either monochrome or saturated colors.

### CRICUT®: WHAT WAS USED



Cricut® George and Basic Shapes Cartridge



Cricut Mini® Personal Electronic Outter



### OTHER MATERIALS NEEDED

- glue card stock

### PROJECT CUT FILES

[Lotus Pop Up Card.ccr](#)

## STEP 1

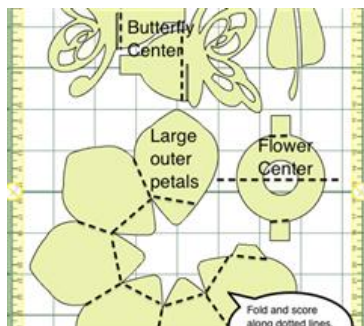
Cut all four layers. A pop up card needs some muscle, so there is an inner and outer card. The large center petals are attached through a large open circle in the center of the inner card. The inner and outer petals are glued down to the card in two spots on either side of the fold. In a pop up, its important to keep all the folds ( card backing, inner and outer petals) aligned- or the 3D elements won't fold into the card correctly. Keep checking the alignment as you go! See dotted lines on the layer photos to see where you will fold. There are two versions here. Version 1 has a plain circle in circle center (with criss cross stamens for 3D effect) The second version has a 3D butterfly in place of circle in circle center.



Layer 1- Inner card with fold lines indicated

Layer 2- outer card- with fold lines indicated

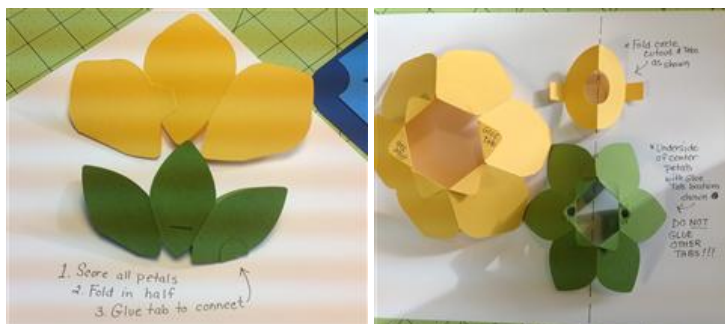
Layer 3- Inner petals with fold lines indicated



Layer 4- outer petals and butterfly or plain center. Fold lines indicated

## STEP 2

Assemble inner and outer petals. Fold and score as indicated in previous step. Fold each assembly of petals exactly in half, then glue tab to adjacent petal. It is very important that the petals fold in half exactly. This will be aligned to the center fold of the card. Keep checking the fold after each step! See photo 2 for location of the TWO glue spot locations. The crisp folding and symmetry is crucial in making a good pop up.



Assemble inner and outer petals

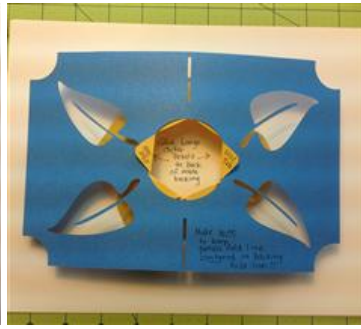
Glue tabs and folding details

## STEP 3

Attach center circle center to inner petals ( here in green) Insert glue tabs through the two slots on opposite sides of the inner petals. Glue to back of petals. Insert large outer petals into large cut out circle in inner card backing. Glue tabs as shown to back of inner card backing. Glue is only applied in two places.. straddling the center fold of the card. Keep all folded items aligned!



Attach center to inner petals. See photo for details.



Attach outer petals to inner card. See photo for details.

## STEP 4

Glue inner card backing (with outer petals glued down already) to outer card backing. Make sure everything is flat and center fold is lined up.



Attached outer petals

## RELATED PROJECTS



Dress Card

[View details](#)



"6 Today" Card

[View details](#)



Happy Birthday Card  
- Giraffe

[View details](#)