

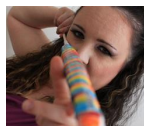


# PROJECT CENTER

<http://www.cricut.com>



## WHAT A PEAR! (PAIR)



**Design by:** [Samantha701468](#) (1 Project)

**About me:** I love to scrapbook, ANYTHING I can get my hands on!!

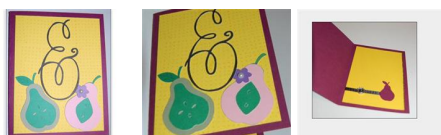
**Project skill level:** [easy](#)

**Project time:** [less than 30 minutes](#)

**Project tags:** [Anniversary](#) [Wedding](#)

[Engagement](#) [Love Notes/Cards](#) [Congratulations](#)  
[Cards](#)

I love my preserves cartridge and I just recently learned how to use "My Cricut Craftroom" So I made this lovely card for a wedding I am attending soon, I thought it was adorable! I hope you do too!



### CRICUT®: WHAT WAS USED



Preserves Cartridge



Cricut Expression® 2



Extreme Fonts Cartridge

### OTHER MATERIALS NEEDED

card stock

Ribbons

half back pearl

Scissors

Adhesive

Metal Ribbons Clasp

Green Ink

#### STEP 1

You will want 2 coordinating colors.  
I choose a plum and a yellow.  
cut the card base by cutting a 8 1/2 x 11 in half length wise, and folding it in half giving you 5 1/2 x 4 1/4.

#### STEP 2

The yellow you will need 2 pieces, both measuring 5 x 3 3/4. one for the front one for the center.

#### STEP 3

glue one yellow piece to the front of the card base.

## STEP 4

the second yellow piece, load it on your mat into the machine and cut a silhouette of the pear just on the bottom right corner (it is important to measure exactly where it will end up or you will end up cutting off the sheet.

## STEP 5

Take a piece of ribbon and slide it around the cardstock and through the cut out pear. Slide a Metal ribbon slider on the ribbon. Tape the ends of the ribbon behind the card.

## STEP 6

Take a pair of scissors and rough up the outer edge of the yellow paper with the pear silhouette. Take a color coordinating ink and drag it up and down the rough edge to add some color (I chose an olive color)

## STEP 7

Using Extreme Fonts, cut out an "&" symbol at 3.5 inches. (On Black)

## STEP 8

choosing colors for your pears, cut those out and layer them up, add a half back pearl to the femme pear.

## RELATED PROJECTS



Love Blocks!

[View details](#)



You are my True Love

[View details](#)



Tea Cup Cupcake Holder

[View details](#)