

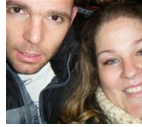


# PROJECT CENTER

<http://www.cricut.com>



## PIRATE NAME PLAQUE



**Design by:** [jwest](#) (0 Projects)

**About me:** There is never enough time for crafting.

**Project skill level:** [easy](#)

**Project time:** [30 minutes to 1 hour](#)

**Project tags:** [Family Home Décor/Accents](#)  
[Vintage Photos/Frames/Boards Wall](#)  
[Décor/Wreaths/Banners Classic Baby Boy Girl](#)  
[Kids Teen](#)

My 8 year old son and I made this with easy name plaque for his bedroom. He was really into pirates at the time so we made it fit the theme.



### CRICUT®: WHAT WAS USED



Gypsy™ handheld design studio for Cricut®



Blackletter Digital Set

### OTHER MATERIALS NEEDED

Scrap Wood

Modge podge

Vinyl

Pirate paper

Sand Paper

## STEP 1

We found a couple of pieces of old scrap wood. One is about 12x8 and the other is about 5x12 and they are 1inch thick. I sanded them just a little to make sure we don't get splinters from them. Then we painted them a gold color to match the paper. Choose any scrapbook paper that you like. We chose pirate paper to match my sons room. Cut the paper to fit the size of your wood. Spread Modge Podge all over it and then lay the paper on and smooth it out so that you don't get any air bubbles. Then to make it look kinda old and weathered we sanded the edges lightly.



Pirate Map paper



Sanded Edges

## STEP 2

Next we chose a font that we felt like looked old and Pirate like. I place the C on the mat on the gypsy screen and then rotated it 90 degrees and stretched it to fit the board that we chose. Then we chose the black vinyl, put it on the mat and loaded it into the Cricut Personal cutter, connected the gypsy and cut. Then we repeated with the OLBY in gold vinyl. measured the board and made the letters fit the size we wanted and cut. Quick Easy and can be adapted to any style.

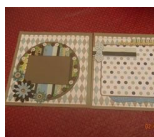


Blackletter Cartridge makes great pirate letters

## AWARDS



## RELATED PROJECTS



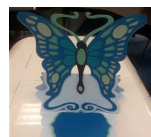
Family Memorise

[View details](#)



Love Blocks!

[View details](#)



Butterfly Display card

[View details](#)