

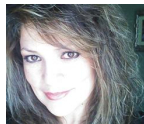


PROJECT CENTER

<http://www.cricut.com>



COFFEE OR TEA



Design by: [Maria2193](#) (57 Projects)

About me: Please visit my blog: maria-linacreativedesigns.blogspot.com or find me on Pinterest at:

<http://www.pinterest.com/maria2193/>

Project skill level: moderate

Project time: 30 minutes to 1 hour

Project tags: Home Décor/Accents Vintage Photos/Frames/Boards Wall

Décor/Wreaths/Banners Classic Trendy House Warming Clean & Simple

Some home decor I made to go with the theme in my sis-in-law's kitchen!!



CRICUT®: WHAT WAS USED



Cricut Expression® Machine with Plantin SchoolBook and Accent Essentials®



Love You a Latte Cartridge

OTHER MATERIALS NEEDED

DCW/linen closet pattern paper

cream cardstock

medium brown cardstock

adhesive and pop dots

(2) 8x8 shadow box frames

distress ink vintage photo

dark brown cardstock

green cardstock

tan cardstock

MS lace punch

Cricut Design Studio

STEP 1

Cut pattern paper 2x (8x8), cut 4 8in. strips of cream paper with MS lace punch, adhere to sides of 8x8 paper. Cut in dark brown and medium brown cardstock. Pop dot dark brown coffee phrase on top of medium brown coffee phrase a bit off centered. Do the same for the Tea phrase from and add additional (phrase) tan pattern paper underneath that.



STEP 2

Cut approx. 5 1/2 in and approx. 4 in. Used design studio. Pop dot various layers, ink edges in of the steam and spoon, pop dot off page. Cut 2x 1 1/4 in green, dark brown and medium brown, pop dot beans to leaf and adhere. Cut 2x about 2 in. in dark brown, green tag and polkadot pattern paper. Ink edge of pattern paper and pop dot onto tea bag. Adhere to page and put in frame.



AWARDS



RELATED PROJECTS



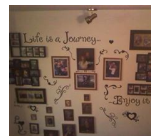
Princess Box

[View details](#)



Word Collage Boards

[View details](#)



Journey Wall

[View details](#)