

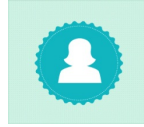


# PROJECT CENTER

tp://www.cricut.com



## VALENTINE'S DAY CANDLE AND MATCHING CARD



**Design by:** ScrapCat (5 Projects)

**About me:** Cardmaker

**Project skill level:** easy

**Project time:** 30 minutes to 1 hour

**Project tags:** Home Décor/Accents Valentine's Day Feminine Modern Trendy Love Celebration Love Notes/Cards Gifts Playful

Design your own Valentine's Day candle and matching card using your Cricut Imagine.



### CRICUT®: WHAT WAS USED



Cricut Imagine® Machine



Cricut Imagine® Art Cartridge, All Wrapped Up

### OTHER MATERIALS NEEDED

Tissue paper

ribbon

parchment paper/wax paper

CCR

candle

heat gun

embellishments

Artisan Paper

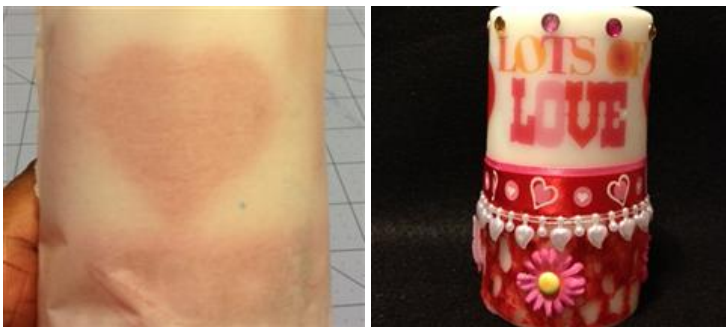
## STEP 1

This is a fairly easy project using your Cricut imagine and tissue paper. Lay the tissue paper out on your mat as you would cardstock. Make sure your mat is not too sticky as this will tear the tissue paper. Choose your design and set it up in CCR to print no more than the circumference of the candle you are using. In this case 9 inches.



## STEP 2

Next you want to cut out your design by hand, leaving at least .25 inch around the design. Secure the design to the candle with a dot of clear drying glue. Cut a piece of parchment paper, enough to wrap around the candle. At this point I also added my Artisan paper and secured with a pin. Now you want to take your heat gun and began to move it around the candle in an up and down motion. Don't stay in one place too long, you will begin to see the image start to melt into the candle. Now remove the parchment paper a briskly go over the Artisan paper with the heat gun. Don't get too close. Carefully press the Artisan paper into the candle as you heat it. I finished this project by making a matching card from the same cartridge, "All Wrapped Up" and decorated each with Valentine themed ribbon, heart ribbon, rhinestones, flowers and brads.



## RELATED PROJECTS



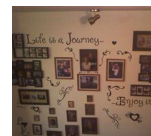
Princess Box

[View details](#)



Word Collage Boards

[View details](#)



Journey Wall

[View details](#)