



PROJECT CENTER

<http://www.cricut.com>



ANNA GRIFFIN: FRAMED BABY ANIMAL NURSERY PRINTS



Design by: [CricutDesignTeam](#) (972 Projects)

About me: The Cricut Design Team is a collection of Cricut projects brought to you by Provo Craft's talented designers! We hope you find these projects to be an inspiration for all of your crafting needs!

Project skill level: moderate

Project time: 30 minutes to 1 hour

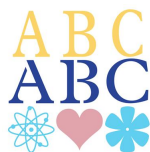
Project tags: [Baby Shower](#) [Home](#)

[Décor/Accents](#) [Photos/Frames/Boards](#) [Trendy Baby](#)

Your little one will coo with delight at these framed baby animal prints.



CRICUT®: WHAT WAS USED



[Plantin SchoolBook Cartridge](#)



[Outtlebug® Machine](#)



[Kate's ABCs Cartridge](#)

OTHER MATERIALS NEEDED

Cricut Craft Room® Design Software

Pearls

Twine

Chalk

Frames

Ink

Adhesive

Foam Squares

White cardstock (1)

Gray cardstock (1)

Moss cardstock (1)

Aqua cardstock (1)

Pink cardstock (1)

Green polka dot pattern paper (1)

Stripe pattern paper (1)

PROJECT CUT FILES

[201200570_A Spring Frames.ccr](#)

STEP 1

Cricut® Cuts:

Use project cut file (CCR file) to create cuts.

1. Ovals

a. Gray oval background (Gray layer)

- b. White oval layer (White layer)
- 2. Animals
 - a. Bases (Gray layer)
 - b. Ground layers (Moss layer)
 - c. Grass layers (PolkaGreen layer)
 - d. Accessories (Pink layer)
 - e. Accents (Aqua layer)

STEP 2

Use paper trimmer to cut three 4" x6" pieces of striped pattern paper to create base.

STEP 3

Create ovals from cuts 1a-1b. Use Cuttlebug® Anna Griffin Matelasse folder to emboss cut 1b. Layer together. Adhere to base.

STEP 4

Create animals from cuts 2a-2e. Ink edges. Layer together. Use foam squares to adhere to base.

STEP 5

Embellish as desired.

AWARDS



RELATED PROJECTS



Welcome Crib Banner

[View details](#)



Tea Cup Cupcake Holder

[View details](#)



Mother's Day Centerpiece

[View details](#)