

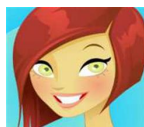


PROJECT CENTER

<http://www.cricut.com>



EXTREME FONT WEEK-3 THANK YOU SEW MUCH CARD



Design by: MelodyLane (50 Projects)

About me: I love all my Cricuts and love creating things and sharing the cut files for Cricut Craft Room and making tutorial videos on most of my projects.

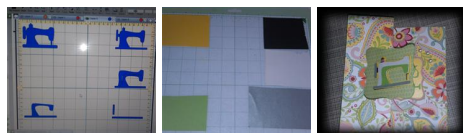
Project skill level: easy

Project time: less than 30 minutes

Project tags: Home Décor/Accents Vintage Mother's Day Spring Summer Thank You Cards

Feminine Classic Teacher Gifts/Cards Cards HobbyLayouts Friend Cards Hobbies Gifts Mom/Grandma Friends

Thank You card using Extreme Font and Everyday Pop up Cards. Before welding the letters together they were only .36 of an inch. very small and cut out great!



CRICUT®: WHAT WAS USED



Everyday Pop-Up Cards Cartridge



Cricut Expression® 2



Cricut® Close To My Heart® Cartridge, Artiste

OTHER MATERIALS NEEDED

double sided card stock

adhesive

pearl embellishments

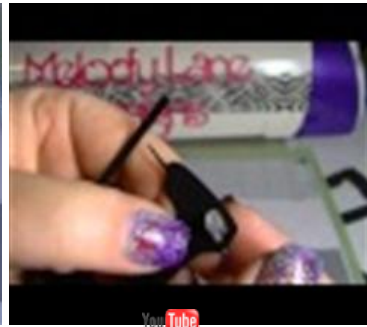
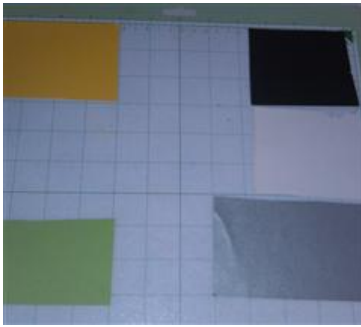
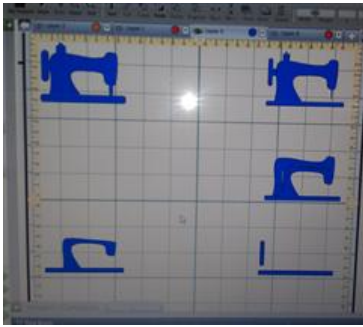
PROJECT CUT FILES

TY Sew Much.ccr

STEP 1

Download the cut file for CCR. In the pictures here you will see the sewing machine images and how I placed the paper on my mat. I added real thread on the black layer as thread and strung it through to the needle. See video.

Watch video to see full instructions.



video

STEP 2

cut the swing card at 5.5" from Artiste cartridge, it is on cut file. Score in center and fold top back and score again. place sewing machine on front of card.



video

STEP 3

cut the rest of cutfile and layer and ink the edges of the tags and adhere the welded words to top layer and place inside the card right behind the front shape. Place embellishments on card as desired.





YouTube

video

AWARDS



RELATED PROJECTS



Princess Box

[View details](#)



Word Collage Boards

[View details](#)



Journey Wall

[View details](#)

<http://www.cricut.com>