

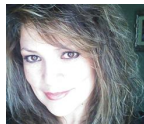


PROJECT CENTER

<http://www.cricut.com>



HAPPY ST. PATRICK'S DAY



Design by: [Maria2193](#) (57 Projects)

About me: Please visit my blog: maria-linacreatedesigns.blogspot.com or find me on Pinterest at:

<http://www.pinterest.com/maria2193/>

Project skill level: easy

Project time: 30 minutes to 1 hour

Project tags: Home Décor/Accents Wall Décor/Wreaths/Banners St. Patrick's Day Trendy

Holiday Celebration Party Decorations/Favors Holiday Décor Playful Clean & Simple Friends

Little something fun and cartoony to bring out the Irish side of my family, as well as wishing everyone, as they're leaving, a Happy St. Pat's Day!!



CRICUT®: WHAT WAS USED



Cricut Expression® Machine with Plantin SchoolBook and Accent Essentials®



Simply Charmed Cartridge



Cuttlebug® Machine

OTHER MATERIALS NEEDED

cardstock to many to list

glitter paper

Foam glitter clover stickers

inks for shading

adhesive and pop dots

clover embossing folder simply charmed

tiny bubbles embossing folder

gold metal paper

small black and med green google eyes

white gel pen

black ribbon

yellow and green glitter

zebra print embossing folder

STEP 1

CC2 worm (hat only) 10" and "Happy St. Pat's Day" phrase, Everyday Pop Up- beer mug 3.5", Simply Charmed- Leprechaun 16" and pot of gold about 4".



STEP 2

Use gel pen and faux stitched "Happy" and "Day", cover "St. Patrick's" with green glitter. Pop dot gold buckle and add foam glitter clover stickers.



STEP 3

Add green google eyes, emboss hair with zebra print and orange ink for shading, then emboss jacket with clover embossing folder and green ink for shading. Use yellow glitter on the button and ink ears and cheeks.



STEP 4

Added additional gold coins, inked them for shading and pop dotted some of them. Used black google eyes and added black satin ribbon.



STEP 5

Embossed foam with tiny bubbles embossing folder, pop dot it and added ink for some shading.



RELATED PROJECTS



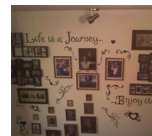
Princess Box

[View details](#)



Word Collage Boards

[View details](#)



Journey Wall

[View details](#)