

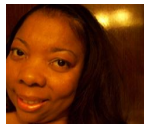


# PROJECT CENTER

<http://www.cricut.com>



## WITH SYMPATHY



**Design by:** [I Love Cards](#) (2 Projects)

**About me:** I love creating cards when I have the time, but lately I've been creating invitations. I love everything about decorating, colors and just being creative.

**Project skill level:** [easy](#)

**Project time:** [30 minutes to 1 hour](#)

**Project tags:** [Sympathy Cards](#) [Feminine](#)

I created this card for my husband's friend who lost their father. I used white metallic & silver metallic paper and embossed the outer layer and layered with butterflies. The butterflies on the side, I used Martha Stewart's butterfly punch.

## CRICUT®: WHAT WAS USED



Cricut Expression® Machine with Plantin SchoolBook and Accent Essentials®



Home Accents Cartridge



Gypsy™ handheld design studio for Cricut®

## AWARDS



## RELATED PROJECTS



Hope card

[View details](#)



Butterfly Kisses Card

[View details](#)



Flower Card

[View details](#)

<http://www.cricut.com>