

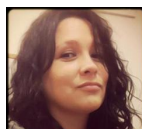


PROJECT CENTER

<http://www.cricut.com>



LUCKY ME " SOUTHWEST DESIGN CONTEST "



Design by: MeriahBoutonHamlin (1 Project)

About me: Stay at home mom of 2, soon to be three. I am on the Pink By Design Team, and enjoy paper crafting.

Project skill level: easy

Project time: less than 30 minutes

Project tags: St. Patrick's Day Country Seasonal Cards Friend Cards Southwest

Made this card to give to my horsey friend!

CRICUT®: WHAT WAS USED



Cricut Expression® 2



Southwest Cartridge

OTHER MATERIALS NEEDED

Cosmo Cricket Wanted Paper Stack

Cuttlebug

Pink By Design Sentiment Stamp

Cuttlebug Folder

STEP 1

Cut Card base 5x5 and add layers

STEP 2

Using Southwest cartridge, (from Eblems and Borders) Cut Lizard, (from Elblems and Borders-Shift) Cut Lizard-s, (from Eblems and Borders Layer) cut Lizard, (from Eblems and Borders Layer-Shift) cut Lizard-s all at 3.5 inches. Using your Cuttlebug and a embossing folder from the Asian inspired Cuttlebug Folder set, emboss the cut from Emblems and Borders Layer.

STEP 3

From Basic, cut Horseshoe, and Horseshoe-s at 3 inches.

STEP 4

Layer all pieces and adhere to card, add 3 leaf clovers from paper punch and bling to Cricut cuts. Add a sentiment tag from Cricut Cartridge Art Philosophy.

RELATED PROJECTS



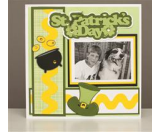
Word Collage Boards

[View details](#)



St. Patrick's Day Treats

[View details](#)



St. Patrick's Day Layout

[View details](#)

<http://www.cricut.com>