



# PROJECT CENTER

<http://www.cricut.com>



## SOUTHWEST PARTY INVITE



**Design by:** Melly2 (3 Projects)

**About me:** I live in Beautiful British Columbia on Vancouver Island. I love to craft in my spare time with my Cricut and my Cuttlebug too.

**Project skill level:** easy

**Project time:** 30 minutes to 1 hour

**Project tags:** Celebration Invitations

Southwest Party Invite I made using the Cricut Craft Room, the Southwest Cartridge and my Cricut Expression.  
<http://scrappinmelon.blogspot.ca/2013/03/southwest-party-invite.html>



### CRICUT®: WHAT WAS USED



Cricut Expression® Machine with Plantin SchoolBook and Accent Essentials®



Southwest Cartridge

### OTHER MATERIALS NEEDED

Distress Ink Vintage Photo

Distress Ink Mustard Seed

Teal and White Cardstock

Pink By Design Party Time Stamp set

Distress Ink Spiced Marmelade

Cricut Craft Room

Recollections Glacier Embossing Powder

adhesive

### STEP 1

Create layers in Craft Room with the Southwest cartridge  
2 shadow layers (for card base)  
2 top layers - 1 with the inside contours hidden to make solid (for the inside of the card) and 1 normal cut for outside of the card

## STEP 2

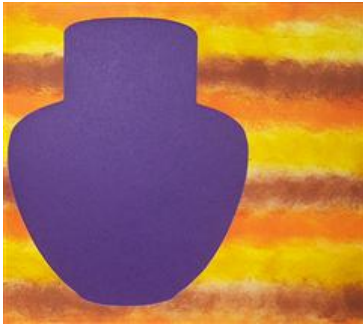
Score the back piece of the base of the card so it can open and close easily.



Southwest Party Invite

## STEP 3

Using Tim Holtz Distress ink in Vintage Photo, Spiced Marmelade and Mustard Seed create pattern on white cardstock. When dry cut out top layer for front of card.



Blending Distress Inks

## STEP 4

Embossed sentiment of choice on solid piece and attach to inside of card. I used Pink By Design's Party Time stamp set and Recollections Glacier Embossing Powder.



Inside of Invitation

## RELATED PROJECTS



Dress Card

[View details](#)



'6 Today' Card

[View details](#)



Balloon Pop-Up Card

[View details](#)

---

<http://www.cricut.com>