



SOUTHWEST PARTY INVITE



Design by: [Melly2](#) (3 Projects)

About me: I live in Beautiful British Columbia on Vancouver Island. I love to craft in my spare time with my Cricut and my Cuttlebug too.

Project skill level: [easy](#)

Project time: [30 minutes to 1 hour](#)

Project tags: [Celebration](#) [Invitations](#)

Southwest Party Invite I made using the Cricut Craft Room, the Southwest Cartridge and my Cricut Expression.
<http://scrappinmelon.blogspot.ca/2013/03/southwest-party-invite.html>



CRICUT®: WHAT WAS USED



Cricut Expression®
Machine with Plantin
SchoolBook and Accent
Essentials®



Cricut® Everyday
Cartridge, Southwest

OTHER MATERIALS NEEDED

- Distress Ink Vintage Photo
- Distress Ink Mustard Seed
- Teal and White Cardstock
- Pink By Design Party Time Stamp set
- Distress Ink Spiced Marmelade
- Cricut Craft Room
- Recollections Glacier Embossing Powder
- adhesive

STEP 1

Create layers in Craft Room with the Southwest cartridge
2 shadow layers (for card base)
2 top layers - 1 with the inside contours hidden to make solid (for the inside of the card) and 1 normal cut for outside of the card

STEP 2

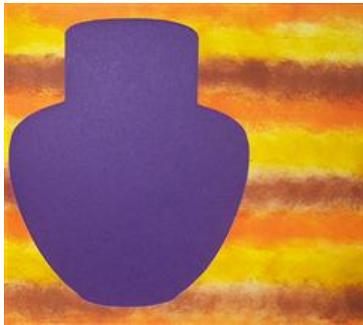
Score the back piece of the base of the card so it can open and close easily.



Southwest Party Invite

STEP 3

Using Tim Holtz Distress ink in Vintage Photo, Spiced Marmelade and Mustard Seed create pattern on white cardstock. When dry cut out top layer for front of card.



Blending Distress Inks

STEP 4

Embossed sentiment of choice on solid piece and attach to inside of card. I used Pink By Design's Party Time stamp set and Recollections Glacier Embossing Powder.



Inside of Invitation

RELATED PROJECTS



Dress Card



"6 Today" Card



Balloon Pop-Up Card



View details



View details



View details

<http://www.cricut.com>