

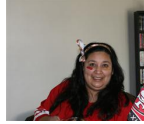


PROJECT CENTER

<http://www.cricut.com>



PICTURE FRAME



Design by: [gailarita](#) (5 Projects)

About me: I am a newbie to the cricut community. But i like vintage looking things. But i guess that i like everything that has to do with crafting.

Project skill level: [easy](#)

Project time: [30 minutes to 1 hour](#)

Project tags: [Home Décor/Accents](#) [Vintage](#) [Photos/Frames/Boards](#) [Gifts](#)

vintage picture frame.



CRICUT®: WHAT WAS USED



Elegant Edges Cartridge



Flower Shoppe Cartridge



Cricut Expression® 2

OTHER MATERIALS NEEDED

- chipboard
- heat gun
- tacky glue
- tin holtz mask
- small string of pearls
- butterfly punch

- acrylic paints
- distress ink & blending tool
- foam squares
- glitter glue
- glosy acent
- color shine in gold lame

STEP 1

elegant edges cuts oblong frame & shadow @ 7".
flower shoppe cuts to fit your project.

STEP 2

paint first layer and then take heat gun to it. add second layer of paint & heat it, as it starts to bubble tap it down with finger. add third coat of paint, heat and tap down til desired look. do that to frame and shadow. let dry.

STEP 3

this is the part where you can go crazy and do what you want. I used Heidi Swapp color shine to make my frame look vintage and old. i inked the edges with vintage photo. (the frame and the shadow.)

STEP 4

i used glossy accents to adhere the small pearls to the frame. add the flowers and butterflies.

STEP 5

using the Tim Holtz mask and laid it down on the shadow of the frame. i used vintage photo over the mask.

STEP 6

i used foam squares to the corners of the back of frame so i can put a picture in the frame. i used a rosarita bean box for my chipboard so i used a piece of the chipboard to make the stand.

RELATED PROJECTS



Princess Box

[View details](#)



Word Collage Boards

[View details](#)



Journey Wall

[View details](#)