



PROJECT CENTER

<http://www.cricut.com>



SWEETHEART PILLOWCASE



Design by: CricutDesignTeam (972 Projects)

About me: I love to create!

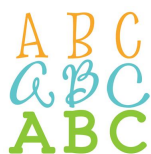
Project skill level: easy

Project time: less than 30 minutes

Project tags: Home Décor/Accents Valentine's Day Modern Girl Holiday Love Celebration Playful Clean & Simple Friends Iron-on

Create these sweet pillowcases at your next girl's night!

CRICUT®: WHAT WAS USED



Lyrical Letters Cartridge



Simply Charmed Cartridge



Cricut Expression® Machine

OTHER MATERIALS NEEDED

Cricut Craft Room® Design Software

Iron

Pillowcase

Press cloth

PROJECT CUT FILES

[201200632_Y Sweetheart Pillowcase.ccr](#)

STEP 1

Cricut® Cuts:
Use project cut file (CCR file) to create cuts.

1. Phrase: Goodnight Sweetheart
 - a. White iron-on lité phrase (White IO layer)
2. Hearts
 - a. Pink iron-on glitter hearts (PinkGl IO layer)

STEP 2

Create phrase from cut 1a. Use iron to adhere to pillowcase.

STEP 3

Create hearts from cut 2a. Use iron to adhere to pillowcase.

STEP 4

Embellish as desired.

AWARDS



RELATED PROJECTS



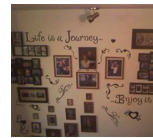
Princess Box

[View details](#)



Word Collage Boards

[View details](#)



Journey Wall

[View details](#)