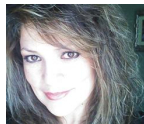




BABY SHOWER INVITATION



Design by: [Maria2193](#) (57 Projects)

About me: Please visit my blog: maria-linacreative designs.blogspot.com or find me on Pinterest at:

<http://www.pinterest.com/maria2193/>

Project skill level: moderate

Project time: 30 minutes to 1 hour

Project tags: Baby Shower Feminine Classic Trendy Baby Girl Celebration Baby Cards

Invitations Cards Playful Clean & Simple

Made this for my sister-in-law, she's finally having a girl, after having had 4 boys. I'm also making a banner, party favors and cupcake wrappers.



CRICUT®: WHAT WAS USED



Cricut Expression® Machine with Plantin SchoolBook and Accent Essentials®



Kate's ABCs Cartridge



Cricut® Close To My Heart® Cartridge, Artiste

OTHER MATERIALS NEEDED

white textured cardstock

green cardstock

grey cardstock

tag cutting dies

white string

white pearls

purple cardstock

lilac cardstock

stamps and ink

purple string

swiss dot emboss folder

STEP 1

Artiste Cart. pg. 61 card feature - in white cardstock cut envie at 11.5 x6 and card at 4x4. Emboss top and bottom flap with swiss dot embossing folder. Print out shower info on card.

STEP 2

In deep purple cardstock cut card at 4.25 x 4.25. Also cut the top portion of the envie in deep purple as to matte top lap of envie. It's going to take a lot of manipulation on CCR or Design Studio. Once attached, on the back side stamp "It's a Girl".

STEP 3

In lilac cards lilac cardstock cut out card 4.5 x 4.5 and emboss with swiss dot folder. Glue all 3 card cut-outs together, one matting the other an so on. Add white pearls to each corner. Card is complete, now onto envie!

STEP 4

Tie yarn in purple and white around top flap of envie. Stamp sentiment on white tag and attach it to a gray tag. Add tag to yarn before it is tied into a bow.

STEP 5

Kate's ABC's - Cut shoes at 1 1/2 to 1 3/4, can't remember exact size, but it's within that measurement. Use white, purple, lilac and green for colors of the shoes. Add pop dots to the bottom tip of the shoes, so the top part bottom part of the shoe keeps the envie closed. Card is complete. You will need a 5.5 x 5.5 envelope to mail it out, which can be found at Michaels.

AWARDS



RELATED PROJECTS



Welcome Crib Banner

[View details](#)



Tea Cup Cupcake Holder

[View details](#)



Mother's Day Centerpiece

[View details](#)