



PROJECT CENTER

<http://www.cricut.com>



8X8 LAYOUT - SNOW MUCH FUN



Design by: [ScrappyVee](#) (100 Projects)

About me: Aussie / Kiwi Mum to 2 little boys. I love scrapbooking my families special moments with fun & playful layouts.

Project skill level: **easy**

Project time: 1 hour to 2 hours

Project tags: Family Winter Baby Kids

Family Layouts Outdoor/Animal Layouts

Seasonal Layouts Outdoor Recreation

Scrapbook Layouts Kids Layouts

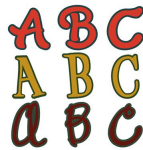
Made using Teddy Bear Parade cart and Type Candy font.



CRICUT®: WHAT WAS USED



Cricut Expression® Machine with Plantin SchoolBook and Accent Essentials®



Type Candy Cartridge



Teddy Bear Parade Cartridge

STEP 1

Teddy cut at 3.5 inches from Teddy Bear Parade. Title is from Type Candy and was welded in CCR at 1 inch. Away paper trimmer was used to make the snow strip and a snowflake punch for flakes.



AWARDS



RELATED PROJECTS



Family Memorise

[View details](#)



Love Blocks!

[View details](#)



Butterfly Display card

[View details](#)

<http://www.cricut.com>