



PROJECT CENTER

<http://www.cricut.com>



DOILY & ROSETTE CARD



Design by: [CricutDesignTeam](#) (972 Projects)

About me: The Cricut Design Team is a collection of Cricut projects brought to you by Provo Craft's talented designers! We hope you find these projects to be an inspiration for all of your crafting needs!

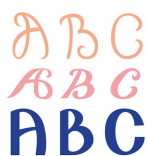
Project skill level: [easy](#)

Project time: [less than 30 minutes](#)

Project tags: [Spring](#) [Summer](#) [Classic Cards](#)

Send a happy hello with this pretty doily card!

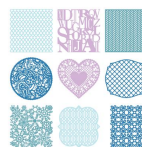
CRICUT®: WHAT WAS USED



Ashlyn's Alphabet Cartridge



Cricut Expression® Machine



Edge to Edge Cartridge

OTHER MATERIALS NEEDED

Paper rosette embellishment

Ribbon

Blue washi tape

Adhesive

White cardstock (1)

Light blue cardstock (1)

Yellow striped pattern paper (1)

PROJECT CUT FILES

[201300432_E Doily & Rosette Card.ccr](#)

STEP 1

Cricut® Cuts:
Ashlyn's Alphabet Cartridge

1. Tag
a. Light blue tag (2" + Tag)

Edge to Edge Cartridge

2. Doily
a. White doily (3 1/2" + 21)

STEP 2

Use paper trimmer to cut one 5 1/2" x 8 1/2" piece of yellow striped pattern paper. Fold in half to create card base.

STEP 3

Create tag from cut 1a. Embellish with washi tape and ribbon as desired. Adhere to card front.

STEP 4

Create doily from cut 2a. Adhere to card front folding right edge to inside front of card.

STEP 5

Embellish as desired.

AWARDS



RELATED PROJECTS



Spring Layout

[View details](#)



Flower Frame Layout

[View details](#)



Balloon Pop-Up Card

[View details](#)