



PROJECT CENTER

<http://www.cricut.com>



VALENTINE MAILBOX



Design by: CricutDesignTeam (972 Projects)

About me: The Cricut Design Team is a collection of Cricut projects brought to you by Provo Craft's talented designers! We hope you find these projects to be an inspiration for all of your crafting needs!

Project skill level: moderate

Project time: 30 minutes to 1 hour

Project tags: Boxes/Bags/Tags School

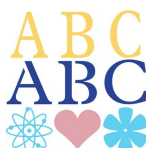
Family Home Décor/Accents Valentine's Day Classic Boy Girl Kids Holiday Celebration Party Decorations/Favors Grade School Kids Crafts Holiday Décor Playful

Help your kids create this cute mailbox to gather all their friends valentines!

CRICUT®: WHAT WAS USED



Cricut Expression® Machine with Plantin SchoolBook and Accent Essentials®



Plantin SchoolBook Cartridge



Valentine's 3D Mailboxes Digital Set

OTHER MATERIALS NEEDED

Ribbon

Adhesive

Circle pattern paper (1)

Pink pattern paper (1)

Pink cardstock (8)

Blue cardstock (1)

PROJECT CUT FILES

[201200023 Valentine Mailbox.ccr](#)

STEP 1

Cricut Cuts:

Valentines 3D Mailbox Exclusive

1. Mailbox

a. Pink mailbox door (8" <mailbox1>)

b. Pink mailbox front (8" Shift + <malbx1-s>)

c. Pink mailbox back (8" Layer1 + <mailbox1>)

d. Pink mailbox side (8" Layer1 + Shift + <malbx1-s>)

e. Pink mailbox side (8" Layer2 + <mailbox2>)

f. Pink mailbox top (8" Layer2 + Shift + malbx1-s>)

g. Pink mailbox bottom (8" Layer3 + <mailbox1>)

2. Flag

a. Blue mailbox flag (8" Layer3 + Shift + <malbx1-s>)

b. Pink Heart (8" Layer4 + <mailbox1>)

3. Hearts

a. Six blue shadow hearts (11" Layer4 + <mailbox1>)

b. Four blue shadow hearts (8" Layer4 + <mailbox1>)

c. Six pink hearts (8" Layer4 + <mailbox1>)

d. Four pink hearts (5" Layer4 + <mailbox1>)

Plantin Schoolbook Cartridge

4. Scallop borders

a. Two circle pattern scallop borders (1 1/8" <scallop>)

STEP 2

Create mailbox from cuts 1a-1g. Fold and assemble.

STEP 3

Create flag from cuts 2a-2b. Layer together. Adhere to mailbox.

STEP 4

Create hearts from cuts 3a-3b. Layer together. Adhere to mailbox.

STEP 5

Create scallop borders from cuts 4a. adhere to mailbox.

STEP 6

Embellish as desired.

AWARDS



RELATED PROJECTS



Gate Gift Bag

[View details](#)



Princess Box

[View details](#)



Frog Prince Gift Bag

[View details](#)