



# PROJECT CENTER

<http://www.cricut.com>



## ANNA GRIFFIN PARTY HAT



**Design by:** CricutDesignTeam (972 Projects)

**About me:** I love to create!

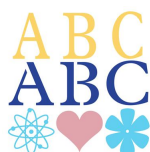
**Project skill level:** easy

**Project time:** less than 30 minutes

**Project tags:** Home Décor/Accents Trendy

Let the festivities begin with a party hat your child will love to wear! Enjoy, Anna

### CRICUT®: WHAT WAS USED



Platin SchoolBook Cartridge



Anna Griffin® Sophisticated Soirees Cartridge

### OTHER MATERIALS NEEDED

Cricut Explore® machine

12" x 12" StandardGrip Cricut® mat

Pink cardstock

16" Elastic string

Eyelet setter

Scissors/craft knife

Cricut Design Space® software

Pink and white cardstock

3D Flower Stickers

Eyelets (2)

Small hole punch

Adhesive

### STEP 1

Using your Cricut Explore™ machine, cut the fringe with bright pink cardstock. With pink and white cardstock cut a large doily. Cut doily in half with a scissors/craft knife. You will have pieces to make 2 hats.

### STEP 2

#### Assemble

1. Attach sides of one half of doily to form a cone shape matching up the patterned edge using your adhesive. Leave a small opening at the top for the tassel.
2. Roll up bright pink cardstock fringe, pinch the top and thread through small opening in top of hat. Secure with adhesive on the inside.
3. Punch a hole on both sides of hat toward the bottom, insert eyelets and set using your eyelet setter.
4. Thread elastic string through eyelets from outside in, tie a knot on the ends to keep from slipping out.
5. Attach 3D flower stickers to front of hat.

## RELATED PROJECTS



Princess Box

[View details](#)



Word Collage Boards

[View details](#)



Journey Wall

[View details](#)

<http://www.cricut.com>